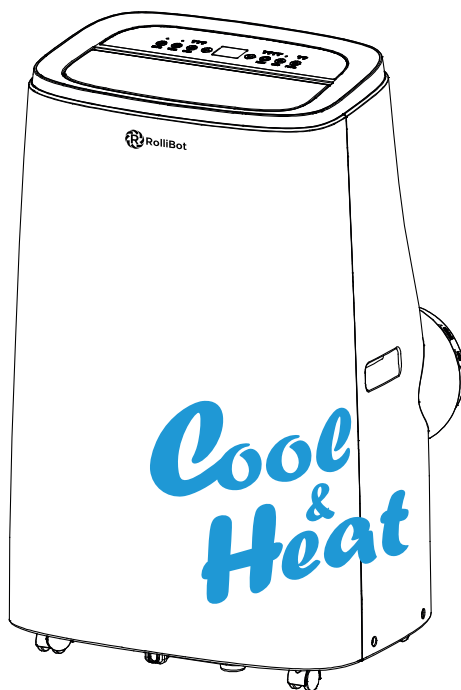




ROLLICOOL™

PORTABLE AC WITH HEATER Rolli Cool A20



USER MANUAL

SAVE THIS MANUAL FOR FUTURE REFERENCE

In order to continue serving our customers and providing the best products, our product information including our user manuals may receive updates from time to time. Please check our website for the latest user manuals and product materials.
Ver.1.0 3/12/19



www.rollibot.com

Customer Service: 1-844-585-6295

Dear RolliCool Owner,

Welcome to the new age of cool!

The Rolli Cool A20 is an air conditioner and heater that uses the latest technology to improve your quality of life. We've designed this unit to be fully portable and easy to use in your home. It features multiple modes to keep you cool or warm no matter what the weather's like!

The A20 is designed for indoor use and can be used in different sized spaces. Casters make it easy to move the unit from room to room so you can stay comfortable anywhere. There's even a remote control for a little more convenience!

All of the unit's features are available through the RolliCool app, available on Android and iOS. After pairing the A20 to your smartphone, you'll have the power of comfort in the palm of your hand.

Thank you for being a part of the Rollibot family!

— The RolliBot Team

Table of Contents

Section 1. Information & Safety Warnings	5
1.1 – Introduction	5
1.2 – Safety Warnings	5
1.3 – FCC Information	6
1.4 – Disposal at End-of-Life	6
Section 2. RolliCool Parts	7
2.1 – Box Contents	7
2.2 – Components Overview	7
2.3 – Control Panel	8
2.4 – Remote Overview	9
Section 3. Setting Up the Unit	9
Section 4. Wireless Setup	12
4.1 – App Installation	12
4.2 – App Pairing	12
4.3 – Amazon Alexa Setup	13
Section 5. How to Use the RolliCool	13
5.1 – Timer Mode	13
5.2 – Cool Mode	14
5.3 – Dehumidify Mode	14
5.4 – Fan Mode	14
5.5 – Heat Mode	14
5.6 – Sleep Mode	14
Section 6. Maintenance	15
6.1 – How to Clean the Filters	15
6.2 – How to Drain the Unit	16
Section 7. Storage	17
Section 8. Troubleshooting	17
Section 9. Warranty	18
9.1 – Violation	18
9.2 – Information	18

Section 1. Information & Safety Warnings

1.1 – Introduction

This user manual will guide you through the functions and usage of your Rolli Cool A20 Portable A/C with Heater. It is important that you follow all instructions and pay attention to all notes that appear throughout this manual. Consult this manual before you attempt to use your RolliCool. If you have questions not answered by this manual or are in need of repair or non-routine service, contact customer service at 1-844-585-6295. Before contacting customer service, please have your purchase information ready as this may be needed during the call. This information may be recorded below.

Date of Purchase: _____

Place of Purchase: _____

1.2 – Safety Warnings

When reading this manual, note these icons:



*Notes with this icon **MUST** be read, understood, and obeyed to prevent injury or damage etc.*



Notes with this icon include relevant information.



Overall Usage

- Do not insert objects into the product.
- The product is not a toy. Do not leave children unsupervised around the product.
- The product is designed for indoor use only.
- Keep the product upright at all times.
- Do not use the product near any of the following places:
 - Near anything flammable
 - Direct sunlight
 - Damp areas
 - Dusty areas
- Do not use wax, thinner, or solvents when cleaning the air conditioner.
- Clean your filters once or more every couple of weeks.
- Do not place any obstacles in front of any air inlet or outlet.
- Do not pull the on the power cords or cables.
- In the event that the product is malfunctioning, shut the power off immediately.
- Switch off the product before cleaning.
- Use only two AAA batteries with the included remote. Do not mix old and new batteries or batteries from different brands.
- Use parts you have received from RolliBot® or that have been included in the original packaging.
- Do not use the product for any purpose other than described in this user manual.



Installation Warnings

- Do not install the product in a sloped setting.
- Do not install the product in direct sunlight.
- Do not install the product in places with open flames or flammable gas.

- Do not use extension cords etc. Only plug the product into a grounded wall outlet.
- Avoid installing the product in damp areas.
- Make sure to drain the product with the included drainage pipe

1.3 – FCC Information

DECLARATION OF CONFORMITY:

This device complies with Part 15 of the FCC Rules.

Operation is subject to the following two conditions: (1) This device may not cause harmful interference, and (2) this device must accept any interference received, including interference that may cause undesired operation.

FCC RELATED INFORMATION:

This equipment has been tested and found to comply with the limits for a Class B digital device, pursuant to Part 15 of the FCC Rules. These limits are designed to provide reasonable protection against harmful interference in a residential installation. This equipment generates, uses, and can radiate radio frequency energy and, if not installed and used in accordance with the instructions, may cause harmful interference to radio communications. However, there is no guarantee that interference will not occur in a particular installation. If this equipment does cause harmful interference to radio or television reception, which can be determined by turning the equipment off and on, the user is encouraged to try to correct the interference by one or more of the following measures:

- Reorient or relocate the receiving antenna.
- Increase the separation between the equipment and receiver.
- Connect the equipment into an outlet on a circuit different from that to which the receiver is connected.
- Consult the dealer or an experienced radio/TV technician for help.

The manufacturer is not responsible for any radio or TV interference caused by unauthorized modifications to this equipment. Such modifications could void the user's authority to operate the equipment.

1.4 – Disposal at End-of-Life

This product must not be disposed of by incineration, landfilling, or mixing with household trash. Improper disposal of the battery contained within this product may result in the battery heating up, rupturing, or igniting which may cause serious injury. The refrigerants contained inside the RolliCool present chemical risks to the environment. The recommended disposal for any Rolli Cool A20 Portable A/C with Heater at its end-of-life is to dispose of the entire unit by contacting your local recycling company.

Local regulations and laws pertaining to the recycling and disposal of any RolliCool unit and/or products containing them will vary according to your country, state, and local governments. You must check laws and regulations corresponding to where you live in order to dispose of your RolliCool unit properly. It is the user's responsibility to dispose of their equipment properly in accordance with local regulations and laws.

For additional information about where you should drop off your RolliCool unit, please contact your local or regional waste management office, your household waste disposal service, or your point-of-sale.

Section 2. RolliCool Parts

2.1 – Box Contents

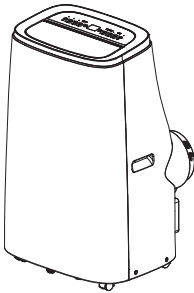
- 1 x Rolli Cool A20 Portable A/C with Heater
- 1 x Remote Control
- 1 x Drainage Pipe
- 2 x Air Filters (pre-installed)
- 1 x Heat Exhaust Pipe
- 1 x Heat Exhaust Pie Connector
- Window Kit Parts
- 1 x User Manual



Window Kit Parts



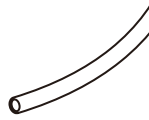
User Manual



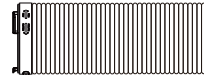
Rolli Cool A20 Portable A/C with Heater



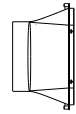
Remote Control



Drainage Pipe



Heat Exhaust Pipe



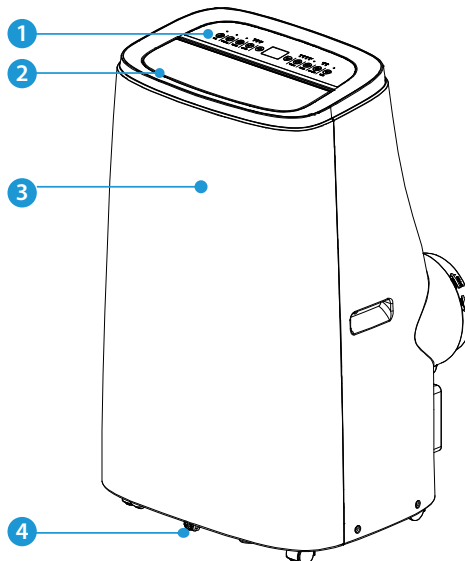
Heat Exhaust Pipe
Connector



Window Kit

2.2 – Components Overview

- 1 Control Panel
- 2 Louvres
- 3 Front Housing
- 4 Casters



5 Upper Filter

6 Upper Drainage Opening

7 Air Vent

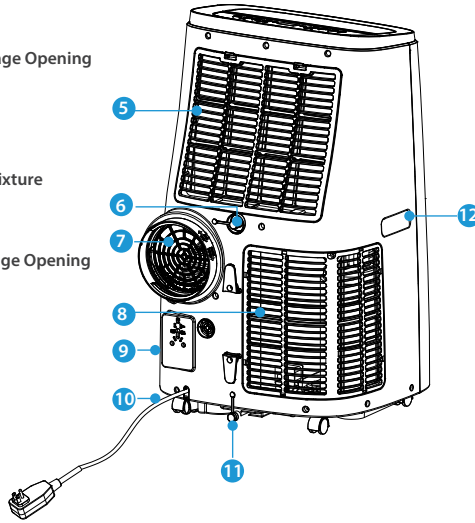
8 Lower Filter

9 Power Plug Fixture

10 Power Cord

11 Lower Drainage Opening

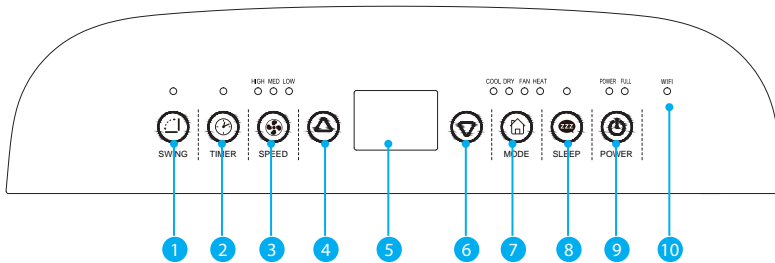
12 Handle



2.3 – Control Panel

The A20 features a digital control panel which turns on when the unit turns on and includes buttons.

Buttons & Parts



1 **Swing Button:** Press to start or stop louver movement.

2 **Timer Button:** Press to turn timer mode on or off.

3 **Speed Button:** Press to cycle between fan speeds (Low, Med, High).

4 **Up Button:** Press to raise temperature or adjust timer duration.

5 **Display:** This section will light up to show temperature and other information.

6 **Down Button:** Press to lower temperature or adjust timer duration.

7 **Mode Button:** Press to cycle between cool, dehumidify, fan, and heat modes.

8 **Sleep Button:** Press to turn on or off Sleep mode.

9 **Power Button:** Press to turn the unit on or off.

10 **WIFI Indicator:** After connecting with the smartphone, this indicator will be lit green. If the RolliCool is not connected to a smartphone, this will flash green.

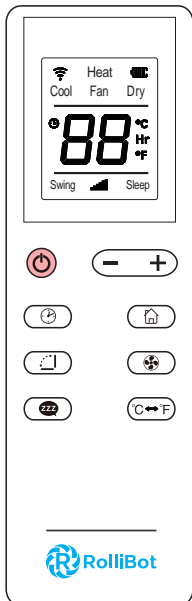


- *Scheduling can be done and/or adjusted via the control panel, remote, or the app. See the following section for more information about the remote. See Section 4 for information about the app.*
- *Press the up and down buttons together on the control panel to switch between Celsius and Fahrenheit.*

2.4 – Remote Overview

The A20 features a remote with a digital display that can be used to control most of the unit's features.

Remote Buttons



Timer Button: Press to turn timer mode on or off.



Mode Button: Press to cycle between cool, dehumidify, fan, and heat modes.



Vent Button: Press to turn open or close the louvers.



Sleep Button: Press to turn on sleep mode.



Power Button: Press to turn the unit on or off.



-/+ Press to lower or raise temperature or adjust timer duration.



Fan Speed Button: Press to cycle through 3 fan speeds.



°C/°F °C/°F Button: Press to toggle between Celsius and Fahrenheit.



- *Avoid pressing two remote buttons simultaneously as this may cause malfunctions.*
- *Avoid using the remote in areas with extreme temperature fluctuations.*
- *If the remote will not be used for extended periods of time, remove the batteries.*
- *The remote control's range is approximately 23 ft. Use it within this range.*
- *Use only two AAA batteries with the included remote. Do not mix old and new batteries or batteries from different brands.*

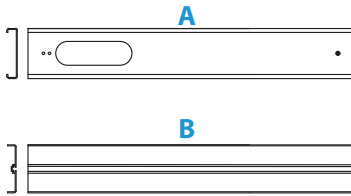
Section 3. Setting Up the Unit



- *Before using the unit, keep it upright for at least two hours.*
- *Do not use extension cords, plug adapters, power strips, etc. Only plug the unit into a grounded wall outlet.*
- *Do not use the unit in bathrooms or other excessively humid areas.*
- *After installation, keep the unit at least 20 in. from the walls at all times.*

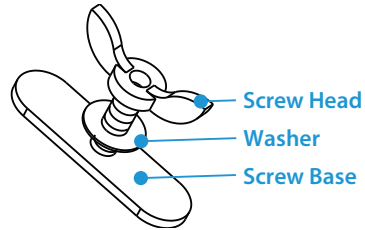
Window Kit Parts

Sections



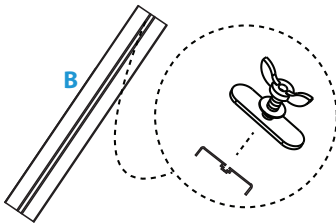
These sections thread into one another and should be placed within a window gap.

Screw Fastener

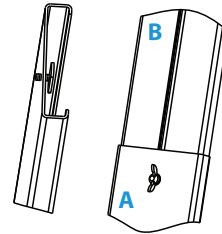


These parts are used to secure the sections together and can be loosened or tightened when adjusting the sections according to window height.

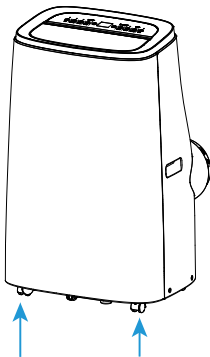
Installation



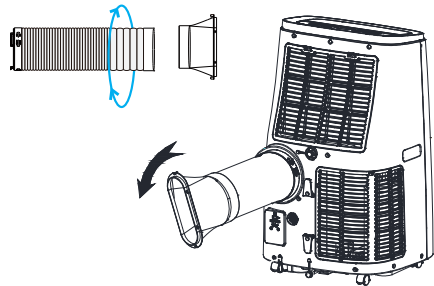
Step 1. Separate one screw fastener and thread the screw base into one end of Section B.



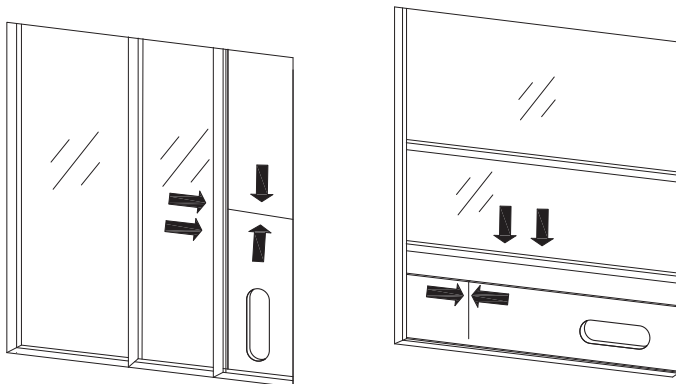
Step 2. Thread Section A onto the end of Section B and use the screw head and washer to secure the sections together.



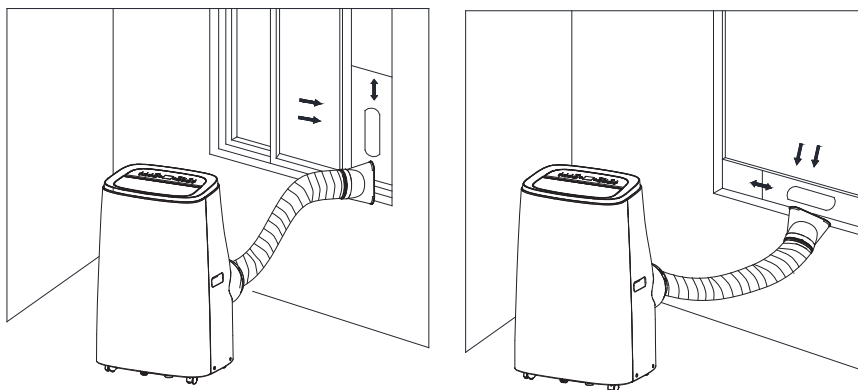
Step 3. Attach the wheels (if needed) and roll the unit into the desired room. In the moving process, ensure that the unit is in an upright position and the RolliCool is placed on a flat surface.



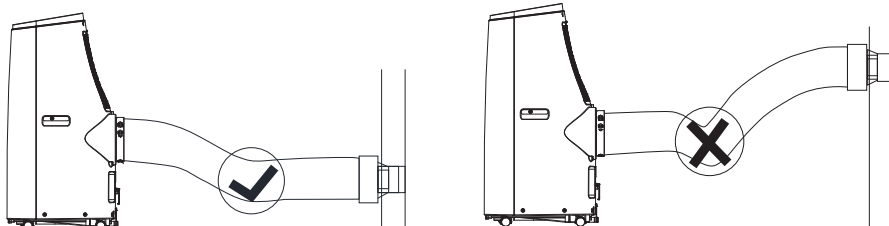
Step 4. Insert the connector into the piper and rotate it clockwise to secure it. Slide the other end of the heat exhaust pipe into the opening outside the air vent on the back of the unit. Unfurl the pipe to the necessary length.



Step 5. Install the assembled kit into a gap between the window and the frame and push the window nearly closed to secure it. Turn the screw head to tighten or loosen the screw fastener and adjust the sections as needed.



Step 6. Attach the heat exhaust pipe to the window kit. If desired, add a screw to the end of the heat exhaust pipe to further secure it to the window kit.



 Make sure the exhaust pipe is not bent or kinked as this may inhibit air flow and/or damage the unit.

Section 4. Wireless Setup

For added convenience, there is an app for this RolliCool unit. The app is compatible with most Android and iOS smartphones. Additionally, the unit can also be paired with Alexa and other products from the Amazon Echo Family.

4.1– App Installation

Step1. Use your smartphone to search the Google Play or App Store for the “RolliCool” application.

Step2. Download and install the app according to your operating system.

4.2 – App Pairing



- Powering on the RolliCool will automatically enable Bluetooth®, which will stay enabled as long as the RolliCool is on.
- For instructions on how to turn on Bluetooth® on your smartphone, consult the manual for your smartphone.
- As with most Bluetooth® devices, it is recommended to keep the connected devices within at least 32 feet of each other. The connection may be terminated or fail to work properly if the connected devices are too far apart.

Step 1. Turn on the RolliCool. The WIFI indicator on control panel will start flash before pairing. Then turn on your smartphone's Bluetooth® and open the RolliCool app.

Step 2. Register for an account and return to the app (fig.1).

Step 3. After logging in, select the desired device type and tap the  icon.

Step 4. On the Access Mode screen, enter Wi-Fi and Bluetooth® info as needed (fig. 2). After that, the app should begin pairing.

Step 5. After connecting successfully, the WIFI indicator on control panel will be lit green. The app can then be used to set schedules, change modes, and more (fig.3).



Your device may be set to a different model name by default. To change the device name, tap “More” in the upper corner then select “Rename device” to enter a new name for your COOL A20.

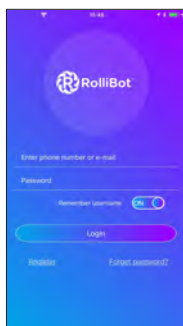


fig.1

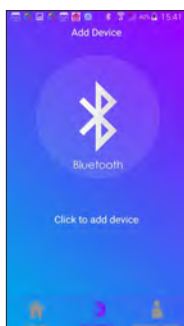


fig.2

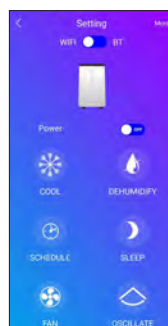


fig.3

4.3 – Amazon Alexa Setup

Step 1. Search “RolliCool” in the Amazon Alexa app home screen (fig. 4).

Step 2. Select the RolliCool app and tap “ENABLE” (fig. 5).

Step 3. Login your RolliCool account and tap “Link Now”. Follow any additional in-app instructions as needed (fig. 6).

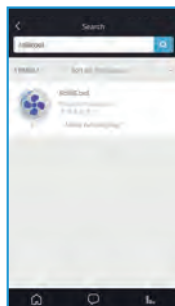


fig. 4

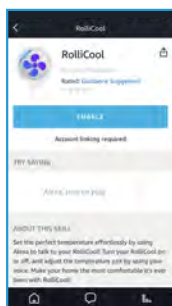


fig. 5



fig. 6

- Make sure Amazon Alexa app and RolliCool are connected to the same Wi-Fi network; otherwise, Alexa may not be able to discover your A/C unit.
- Make sure your Wi-Fi network is stable. If the Wi-Fi is unstable, Alexa may disconnect and not work correctly with your RolliCool.

Section 5. How to Use the RolliCool

The A20 features a number of ways to control the unit. Most features can be accessed from the unit's control panel, on the remote, or in the RolliCool app.

- In most cases where the remote can be used, the app can also be used as a substitute.
- To keep the COOLA20 from filling up with water too quickly when certain modes are used, it may be best to attach the drainage hose. It's recommended to attach the hose to the upper opening when using cool or dehumidify modes and to attach it to the lower opening when using heat mode. See Section 6.2 for information.

5.1 – Timer Mode

With this mode, the unit will automatically turn on or off and regulate temperature according to the selected times.

- Turning Timer Mode on when the unit is OFF means setting the length of time before the unit will turn on.
- Turning Timer Mode on when the unit is ON means setting the length of time the unit will run before it shuts off.
- After setting the timer, the A/C unit will enter Timer Mode. While the unit is in Timer Mode, it will operate according to the selected timer duration. Pressing the timer button again will turn timer mode off and cancel any duration setting.

To Set a Turn On Time

1. When the unit and remote are off, press the timer button on the control panel or remote.
2. Use the up and down buttons (-/+ on the remote) to select the time the A/C unit will turn on, e.g., selecting “03” will prompt the unit to turn on in 3 hours' time etc.
3. After the selection is complete, the display's “Hr” light will turn on.

- When a schedule is active, the unit will not turn on if the chosen temperature is higher than the indoor temperature.

To Set a Shutoff Time

1. When the unit and remote are on, press the timer button on the control panel or remote.
2. Use the up and down buttons (-/+ on the remote) to select the time the A/C unit will turn off, e.g., selecting "03" will prompt the unit to turn off in 3 hours' time etc.
3. After the selection is complete, the display will show the current indoor temperature and the "Hr" light will turn on.

5.2 – Cool Mode

With this mode, the unit will turn on and regulate temperature as selected.

1. Press the power button on the control panel or remote.
2. Press the mode button on the control panel or remote multiple times until the display's "Cool" light turns on.
3. Use the up and down buttons (left/right on the remote) to set the desired temperature 61~88°F (16~31°C).
4. Use the fan button to cycle through fan speeds.



When cool mode is active, the unit will not turn on if the chosen temperature is higher than the indoor temperature.

5.3 – Dehumidify Mode

With this mode, the unit will turn on and begin removing moisture from the air.

1. Press the power button on the control panel or remote.
2. Press the mode button on the control panel or on remote multiple times until the display's "Dry" light turns on.



In dehumidify mode, the fan speed is automatically set to low and cannot be adjusted.

5.4 – Fan Mode

With this mode, the unit will turn on and begin use the fan to promote air circulation.

1. Press the power button on the control panel or remote.
2. Press the mode button on the control panel or remote multiple times until the "Fan" light turns on.
3. Use the speed button to cycle through speeds (High, Medium, Low).

5.5 – Heat Mode

With this mode, the unit will turn on and begin outputting the air.

1. Press the power button on the control panel or remote.
2. Press the mode button on the control panel or on the remote multiple times until the display's "Heat" light turns on.
3. Use the up and down buttons (left/right on the remote) to set the desired temperature 61~88°F (16~31°C).
4. Use the fan button to cycle through speeds.

5.6 – Sleep Mode

With this mode, the unit will turn on and begin operating at a low speed. This mode is similar to fan mode at low fan speed and functions as a way to aid sleep especially if you are used to light noise around bedtime.

1. Press the power button on the control panel or remote.
2. Press sleep button on the control panel or the sleep mode button on the remote. The display's "Sleep" light should turn on. Press again to turn this mode off.



In sleep mode, the fan speed is automatically set to low and cannot be adjusted.

Section 6. Maintenance

Proper maintenance will help improve your RolliCool's performance. Periodically, the RolliCool will need its filters cleaned. For optimal performance, the filters should be cleaned at least twice a month.



- *If any type of non-routine maintenance is needed, such as any maintenance not described in Section 6 of this manual, please contact customer service or a certified HVAC professional as the unit contains refrigerant.*
- *Wipe the exterior clean with non-abrasive cloth. If needed, cloth can be dampened with water.*
- *Do not use harsh cleaning chemicals as these may damage the unit.*

6.1 – How to Clean the Filters



- *Please make sure your A/C unit is completely powered off before performing any type of maintenance.*
- *Do not scrape the air filters as they may sustain damage.*
- *A hand vacuum may be used to clean filters.*
- *Replace filters after cleaning. Do not use the RolliCool without the filters.*
- *If water has been used to clean any filter, ensure it is completely dried before reinstalling. Do NOT dry any filter in direct sunlight.*
- *DO NOT wash the black carbon filter. Only the other two filters may be washed.*

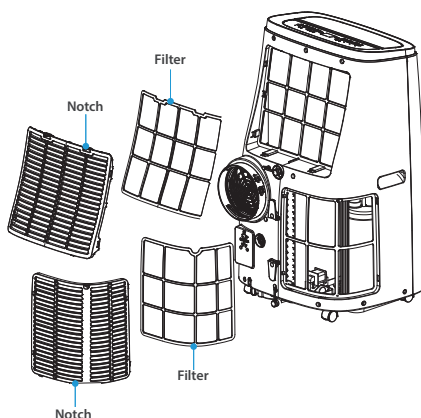


fig. 7

Cleaning the Upper Filter


1. Use the screwdriver to remove the screw on the cover as needed.
2. Reach under the notch and remove the cover.
3. Remove the filter and soak it in lukewarm water or use a vacuum to clean the filter. Mild detergents may be used.
4. After the filter has completely dried, reinstall it.

Cleaning the Lower Filter

1. Use the screwdriver to remove the screw on the cover as needed.
2. Reach under the notch and remove the cover.
3. Remove the filter and soak it in lukewarm water or use a vacuum to clean the filter. Mild detergents may be used.
4. After the filter has completely dried, reinstall it.

6.2 – How to Drain the Unit

In most cases, the A/C unit will not require draining. In the event that draining is necessary, the unit will sound an alarm and the display's "Full" light will turn on to indicate the water reservoir inside is full.

-  • Please make sure your A/C unit is completely powered off before performing any type of maintenance.
- If relocating the unit before draining, move it carefully so as not to spill the water inside the reservoir.
- Make sure the drainage pipe has adequate space underneath for draining. If using the lower drainage opening, ensure there is a suitable area for water runoff. If using the upper drainage opening, fetch a container for water runoff before connecting the pipe.
- Keep the drainage cover and the water plug on at all times when not draining the unit.
- When draining the unit, do not allow the power cord to come in contact with water.
- During drainage, the unit may be tilted slight backwards to promote faster drainage.
- Keep in mind the unit may hold more water than expected. If using a container, do not use a small one or either take care of drainage outdoors.

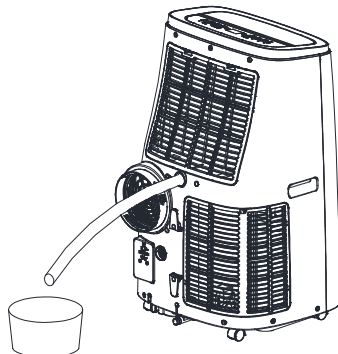


fig. 8

Using the Upper & Lower Drainage Openings

Remove the pre-installed caps and covers as needed.


Step by Step

-  The steps are the same for both the upper and lower drainage openings.

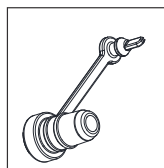
1. Turn off and unplug the unit then move it to a suitable location for drainage.
2. Locate the opening and remove the pre-installed plug (fig. 10).
3. Fit the drainage pipe over the connector.

-  If the drainage pipe is too stiff and/or cannot be attached, try soaking the end in hot water to soften it first.

4. Allow the water to drain.

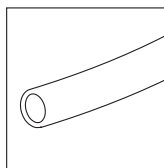
-  After draining is complete, it is recommended to turn the unit on and run it in fan mode at the lowest speed for at least two hours in order to ensure the drainage pipe dries inside.

5. Detach the drainage pipe.
6. Reinstall the plug back on to close the opening.



Plug

Pre-installed. This piece keeps any water from draining out unexpectedly.



Drainage Pipe

Fits over the connector and allows water to drain out and from the unit.

fig. 9

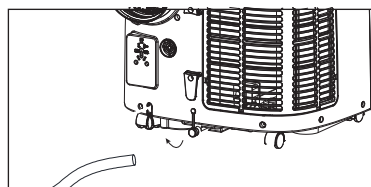


fig. 10

Section 7. Storage

Before storing your Rolli Cool A20, select a dry, indoor environment. Properly storing your RolliCool will help improve performance and battery life expectancy.

Step 1. Turn the unit off.

Step 2. Remove the heat exhaust pipe and window kit as needed for storage with the unit.

Step 3. Drain the unit of any water and insure all parts are completely dry.

Step 4. Turn the unit on and run it in fan mode at the lowest speed for at least two hours in order to ensure the inner reservoir is completely dry inside.

Step 5. Turn off the unit and install the power cord's plug into its fixture on the back of the unit.

Step 6. Remove the remote batteries and store separately.



- Always turn the unit off before transporting or storing.
- Cover the unit to protect it from dust. Do not store in a dusty environment as dust may cause damage over time.
- Store the unit indoors at a dry and stable temperature. Do not store in an unheated garage, shed, or other locations with extreme temperature fluctuations.

Section 8. Troubleshooting

Problems	Possible Causes	Solution(s)
The unit does not work.	There is no electricity.	Turn it on after connecting it to a socket with electricity.
	The overflow indicator displays.	Drain the water inside.
	The indoor temperature is too low or too high.	Use the unit when the indoor temperature is between 44-95 °F (7-35 °C). Change the set temperature.
The cooling effect is weak.	There is direct sunlight.	Cover any direct sunlight coming through the windows.
	Doors or windows are open; there are a lot of people; or there are other sources of heat.	Close doors and windows.
	The filter is dirty.	Clean or replace the filter.
	The air inlet or outlet is blocked.	Clear obstructions.
Excessive Noise	The unit is not placed on a flat surface.	Put the unit on a flat and stable surface.
Compressor issues	Overheating protection started.	Wait 3 minutes until the temperature is lowered then restart the unit.
The remote control does not work.	The remote and unit are too far apart.	Get closer to the RolliCool and make sure that the remote control directly faces the unit.
	The remote isn't pointed in the right direction.	
	Batteries are dead.	Replace batteries.

When the RolliCool encounters errors, the display may show certain error codes. Refer to the table below.

Code	Possible Cause	Solution(s)
E1	Indoor temp. sensor failure	Contact customer service for troubleshooting.
E2	EVA sensor failure	Contact customer service for troubleshooting.

If none of the above information resolves your issue, please visit our website at www.rollibot.com or contact customer service at 1-844-585-6295.

Section 9. Warranty

9.1 – Violation

The Rolli Cool A20 Portable A/C with Heater cannot be repaired or serviced within its warranty period if any of the following has occurred:

- The warranty has expired
- Damage occurred during or in relation to non-routine and/or unauthorized disassembly
- Failure to provide a valid proof of purchase when requesting service or repair
- Damage occurred as a result of natural disaster etc.
- Damage occurred due to unexpected factors or man-made reasons (including mis-operation, fluid found in any openings, improper insertion or pulling, hauling, bumping, improper voltage input and others)

9.2 – Information

One Year Limited Hardware Warranty

Your Rolli Cool A20 Portable A/C with Heater ("Product") includes a One Year Limited Hardware Warranty ("Warranty"). The Warranty covers product defects in materials and workmanship under normal use. This Warranty is limited to residents of the United States and Canada only and is available only to original purchasers. This Warranty gives you specific legal rights, and you may also have other rights which vary from state to state.

This Warranty starts on the date of your purchase and lasts for one year (the "Warranty Period"). The Warranty Period is not extended if the Product is repaired or replaced. We may change the availability of this limited warranty at our discretion, but any changes will not be retroactive.

Warranty services are provided by RolliBot Warranty Pro ("WP"). If a hardware defect arises and a valid claim is received within the Warranty Period, at its option and to the extent permitted by law, WP will: (1) repair the hardware defect by using new or refurbished parts that are equivalent to new in performance and reliability; or (2) exchange the Product with a product that is new or refurbished which is substantially equivalent to the original product. This Warranty is for one replacement only of like-items and does not cover items out of production if the product is no longer made or stocked. This Warranty is not assignable or transferable. The original purchaser may call WP's toll-free number at 1-844-585-6295 for a service request.

When a product or part is exchanged, any replacement item becomes your property, and the replaced item becomes WP's property. This warranty only covers technical hardware defectiveness during the warranty period and under normal use conditions. WP does not warrant uninterrupted or error-free operation of this Product.

This Warranty does not cover any damage due to: (a) transportation; (b) storage; (c) improper use; (d) failure to follow the product instructions or to perform any preventive maintenance; (e) modifications; (f) unauthorized repair; (g) normal wear and tear; or (h) external causes such as accidents, abuse, or other actions or events beyond our reasonable control.

Important: Do not disassemble the Product. Disassembling the Product will void this Warranty. Only WP or a party expressly authorized by WP should perform service on this Product.

DISCLAIMER OF WARRANTY: THE REMEDIES DESCRIBED ABOVE ARE YOUR SOLE AND EXCLUSIVE REMEDIES AND OUR ENTIRE LIABILITY FOR ANY BREACH OF THIS LIMITED WARRANTY. OUR LIABILITY SHALL UNDER NO CIRCUMSTANCES EXCEED THE ACTUAL AMOUNT PAID BY YOU FOR THE DEFECTIVE PRODUCT, NOR SHALL WE UNDER ANY CIRCUMSTANCES BE LIABLE FOR ANY CONSEQUENTIAL, INCIDENTAL, SPECIAL OR PUNITIVE DAMAGES OR LOSSES, WHETHER DIRECT OR INDIRECT.

SOME STATES DO NOT ALLOW THE EXCLUSION OR LIMITATION OF INCIDENTAL OR CONSEQUENTIAL DAMAGES, SO THE ABOVE LIMITATION OR EXCLUSION MAY NOT APPLY TO YOU.

THE DURATION AND REMEDIES OF ALL IMPLIED WARRANTIES, INCLUDING WITHOUT LIMITATION THE WARRANTIES OF MERCHANTABILITY AND FITNESS FOR A PARTICULAR PURPOSE ARE LIMITED TO THE DURATION OF THIS EXPRESS LIMITED WARRANTY

