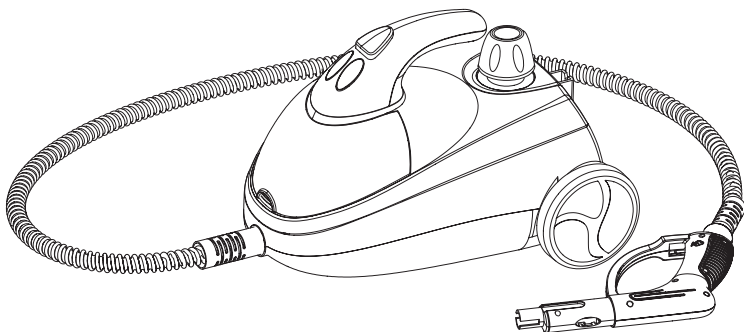




STEAMER ST01



USER MANUAL

In order to continue serving our customers and providing the best products, our product information including our user manuals may receive updates from time to time. Please check our website for the latest user manuals and product materials.

Rollibot.com



Table Of Contents

Section 1. Information & Safety Warnings	4
1.1 – Introduction	4
1.2 – Safety Warnings	4
1.3 – Important Note.....	5
Section 2. Steamer Parts	6
2.1 – Box Contents	6
2.2 – Product Overview	7
Section 3. Getting Ready to Use Steamer	8
3.1 - Accessories for Cleaning	8
3.2 - Assembling and Attaching Accessories	9
3.3 - Installing the Floor Brush Angled Adapter	9
3.4 - Using the Floor Brush Mop Pad	9
3.5 - Using the Fabric Steam Head	10
3.6 - Filling the Water Tank	10
3.7 - Steam Gun Operation	11
3.8 - Rebuilding Steam Pressure While In Use	12
Section 4. Using the Steamer	12
Section 5. Cleaning and Maintenance	13
Section 6. Specifications	13
Section 7. Troubleshooting	14
Section 8. Warranty	14
8.1 – Violation.....	14
8.2 – Information.....	15

Section 1. Information & Safety Warnings



1.1 – Introduction

This user manual will guide you through the functions and usage of your Rollibot Steamer. It is important that you follow all instructions and pay attention to all notes that appear throughout this manual. Consult this manual before you attempt to use your steamer. If you have questions not answered by this manual or are in need of repair or non-routine service, contact customer service at support@rollibot.com. Before contacting customer service, please have your purchase information ready as this may be needed. This information may be recorded below.

Date of Purchase:

Place of Purchase:

1.2 – Safety Warnings

-  • *Notes with this icon MUST be read, understood, and obeyed to prevent injury or damage etc.*
-  • *Notes with this icon include relevant information.*

Overall Usage

- The product is not a toy. Do not leave children unsupervised around the product.
- Stay clear of steam and steam accessories. DO NOT place hand in front of steam accessories.
- Water drops are hot and may burn skin. Use extreme caution when using steam plate overhead, and routinely empty water from steam plate. Wear eye protection and gloves when using this steamer.
- Steam handle may become warm to the touch during usage.
- Allow parts to cool before changing accessories and /or opening pressure cap.
- DO NOT allow water to boil dry. Boiling dry may cause overheating and fire.
- Power cord must be connected to grounded (3 prong) outlet.
- DO NOT use the unit if the power cord is worn or damaged. Never repair a power cord.
- DO NOT pull water container by power cord.
- DO NOT allow water or steam to enter light switches or sockets.
- DO NOT modify parts or components. Never repair damaged or worn parts.
- Water container must rest on a sturdy, level surface and in upright position.
- NEVER leave Steamer unattended.
- Read all instructions and warnings before each use.

1.3 – Important Note

CLEANING FABRICS

- A number of materials and fabrics are NOT suitable to be cleaned by steam. DO NOT use on leather, wax polished furniture or floors, synthetic fabrics, velvet, Dralon or other delicate, steam sensitive materials.
- When steaming any surface for the first time, it is recommended that you consult the manufacturer's guidelines for cleaning. Always test a small area before starting.

CLEANING GLASS/MIRRORS

- Thermal shock can shatter glass. Do not apply steam to glass surfaces that are cooler than 32°F.

ELECTRICAL CONNECTIONS

- DO use a three-pronged extension cord that is at least 18 gauge.
- DO only plug the cord or extension cord into a three-pronged grounded power supply.
- To prevent electrical shock, NEVER immerse the Steamer into water or other liquids.

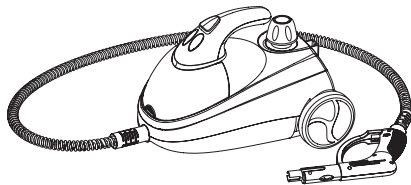
STORAGE

- Make sure unit is clean and dry before storing and always follow cool down instructions. Store in a dry location. To prevent damage, the electrical cord should not be crimped during storage.
- Keep away from heat sources.

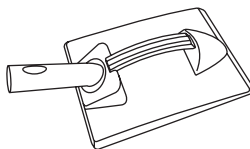
Section 2. Steamer Parts

2.1 – Box Contents

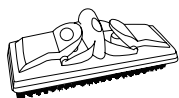
- 1 x Steamer ST01
- 1 x Wallpaper Steam Plate
- 1 x Floor Brush
- 1 x Floor Brush Angled Adapter
- 1 x Floor Brush Mop Pad
- 2 x Extension Tubes
- 1 x Jet Nozzle
- 1 x Straight Adapter
- 4 x Nylon Brushes
- 2 x Brass Brushes
- 1 x Fabric Steam Head
- 1 x Squeegee
- 1 x Fabric Steam Microfiber Cloth
- 1 x Funnel



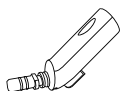
Steamer ST01



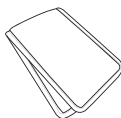
Wallpaper Steam Plate
(Assembly Required)



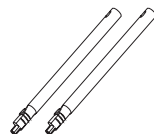
Floor Brush



Floor Brush
Angled Adapter



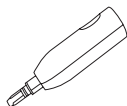
Floor Brush Mop Pad
(17.7" x 5.2", Blue)



Extension Tubes



Jet Nozzle



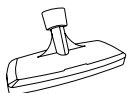
Straight Adapter



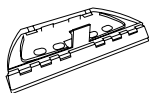
Nylon Brushes



Brass Brushes



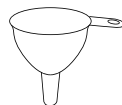
Fabric Steam Head



Squeegee

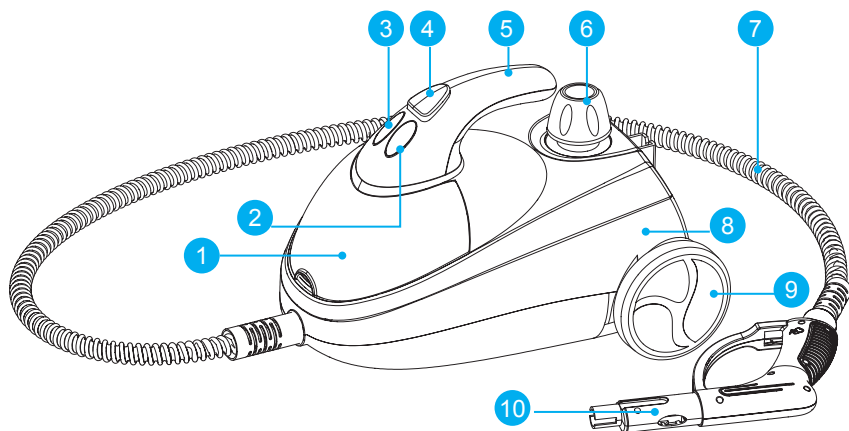


Fabric Steam
Microfiber Cloth

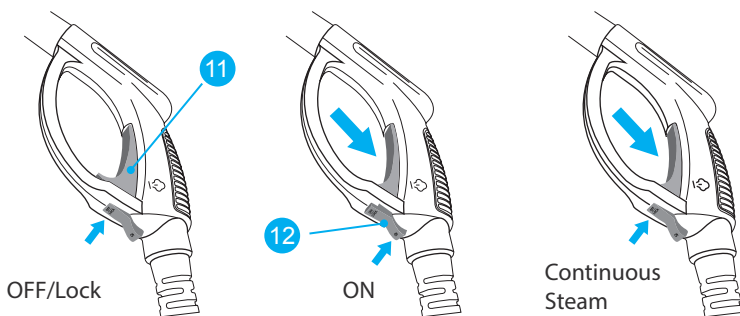


Funnel

2.2 – Product Overview



Steam Gun



- 1 Accessories Storage
- 2 Steam Indicator Switch (Orange Light)
- 3 Operating Indicator (Red Light)
- 4 ON/OFF Power Button
- 5 Carrying Handle
- 6 Pressure Cap
- 7 Fixed Steam Hose
- 8 Water Tank
- 9 Wheel
- 10 Steam Gun
- 11 Steam Trigger
- 12 Safety ON/OFF Switch

Section 3. Getting Ready to Use Steamer

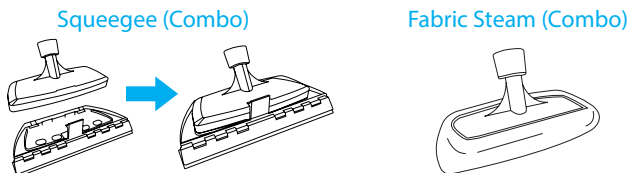
3.1 - Accessories for Cleaning

Squeegee

To use the squeegee, attach it onto fabric steam head first. It is a versatile tool for cleaning bathroom shower door, windows and walls. Do not use on glass when temperature is below 32°F (0°C). Glass may crack in cold temperatures.

Fabric Steam

Cover the fabric steam head with included microfiber cloth and use for garment steaming and for removing dust mites from mattresses.



Jet Nozzle

The jet nozzle can be used to disinfect bathroom and kitchen fixtures and hard-to-reach places.

Stiff Nylon Brushes

The nylon brushes can be used in hard-to-reach areas around sink and bathroom faucets.

Brass Brushes

The brass brushes can be used to remove grease and grime found on grills and ovens.

Jet Nozzle



Nylon Brushes



Brass Brushes

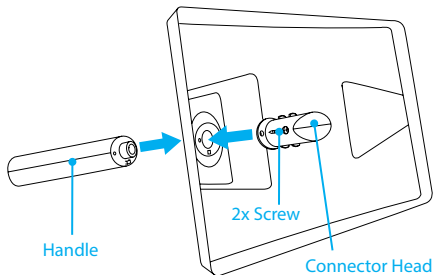


Wallpaper Steam Plate

The wallpaper steam plate is used to remove wallpaper easily. It needs to be assembled before use.

Step 1. Insert handle onto the hole of plate from top.

Step 2. Cover the connector head onto the handle of plate, then use the included screws to tighten it in place.



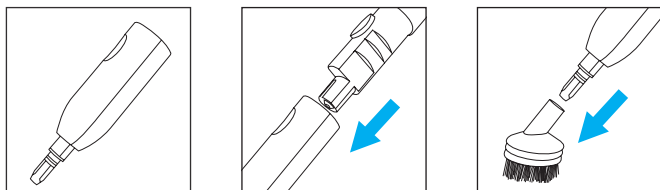
3.2 - Assembling and Attaching Accessories

! *The straight adapter is used to attach accessories to the steam gun. ALWAYS attach accessories before turning the unit on.*

Step 1. Take the accessories out from the package and accessories storage compartment of steamer.

Step 2. Use the straight adapter to attach an accessory, such as a brush.

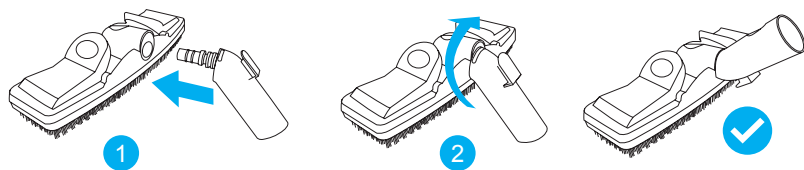
Step 3. Slide the adapter over the steam gun nozzle, align the oval hole with the lock/release button and push the button to allow the attachment to slide into place. (If needed, use the extension tubes between steam accessory and steam gun.)



3.3 - Installing the Floor Brush Angled Adapter

Step 1. Insert the floor brush angled adapter into the interface of floor brush with the end facing downward, and push the adapter forcefully until you hear a snap **1**.

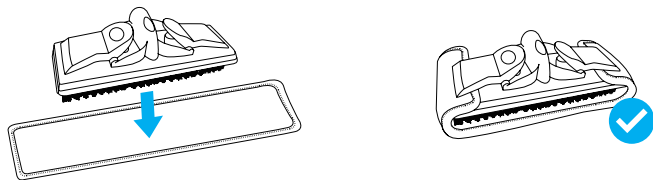
Step 2. Rotate the angled adapter and position it upwards to finish the installation **2**.



3.4 - Using the Floor Brush Mop Pad

Step 1. Position and center the floor brush directly above the mop pad.

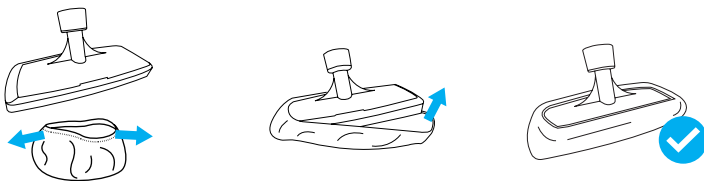
Step 2. Wrap the mop pad around the brush head and use the brush clips to secure the mop pad.



3.5 - Using the Fabric Steam Head

Step 1. Stretch open the opening of the microfiber cloth (cap-shaped, white).

Step 2. Place the cloth over the fabric steam head, and make sure that it completely covers the fabric steam head.



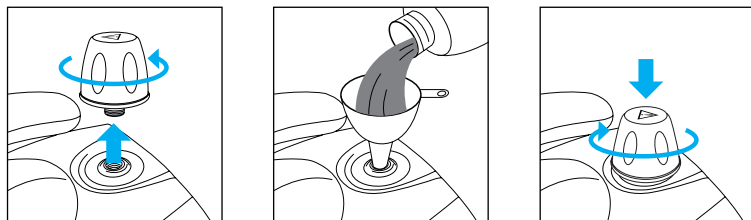
3.6 - Filling the Water Tank

! NEVER fill the tank while the steamer is plugged in.

Step 1. Unscrew the pressure cap.

Step 2. Fill the tank using included funnel. The tank holds up to 50.7 fl-oz.

Step 3. Fasten the pressure cap tightly into place.



Water Usage And Steam Time Guidelines

Amount Of Water	Duration Of Steam
13.53 fl-oz. / 400ml	Approximately 15 min.
27.05 fl-oz. / 800ml	Approximately 30 min.
50.72 fl-oz. / 1500ml	Approximately 40 min.

Refilling The Water Tank

If the unit has been in use, ALWAYS follow these safety precautions before removing the water tank safety cap:

- Switch the unit to the OFF position and unplug the unit. Allow at least 30 minutes for the unit to cool.
- Release all of the steam pressure in the unit by pressing the steam flow trigger on the steam gun. (Note: The red safety switch must be in the ON position.)

- ❗ Failure to follow these precautions may result in burns from escaping steam when the water tank safety cap is removed.
- 🌀 Safety Cap will rotate but will not unscrew until steamer is cool and pressure is released.
- ❗ For household use only. Do not overfill reservoir as it may cause damage to the unit. Allow a 30-minute cool down period before refilling the reservoir.

3.7 - Steam Gun Operation

- 🌀 Steam output is controlled through the steam handle. The handle has both a steam trigger and red safety switch.

Intermittent steam output

Step 1. Press the red safety switch to the ON position.

Step 2. Push the trigger to release steam.

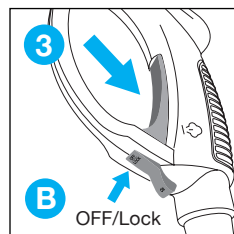
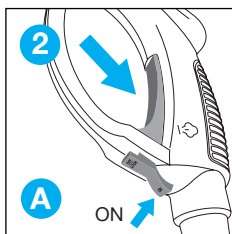
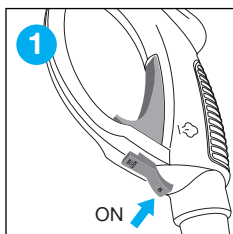
Continuous steam output

Step 1. Press red safety switch to the ON position.

Step 2. Push down the trigger and keep holding it down. **A**

Step 3. While still holding down the trigger, press the safety switch to LOCK position. The trigger is now locked into continuous steam mode. **B**

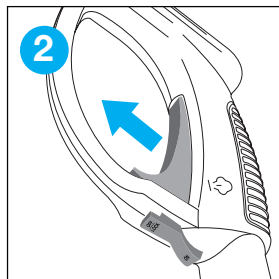
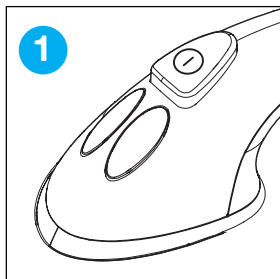
Step 4. To unlock from continuous steam mode, press the safety switch to ON position, then release the trigger.



3.8 - Rebuilding Steam Pressure While In Use

Step 1. If the orange steam indicator light comes on during use, it indicates the steamer needs to rebuild pressure in the tank. The steamer may still be used while pressure rebuilds.

Step 2. Release the steam gun trigger and wait approximately 40 seconds for the steamer to rebuild pressure.



HOT STEAM AND PARTS:

May cause injury, including skin burns or property damage. Temperatures exceed 212° F (100° C). Burns can occur from hot water or steam.

! *DO NOT touch the steam nozzle or attempt to connect accessories while unit is in use.*

NEVER direct the steam at a person, pet or electrical device.

Section 4. Using the Steamer

Step 1. Unscrew the safety cap by turning counterclockwise.

Step 2. Fill the tank using the funnel provided. The tank holds up to 50.7 fl-oz. /1500ml.

 *Only use distilled water as mineral build-up from tap water can shorten the life of the steamer.*

Step 3. Once full, replace the safety cap by turning clockwise, fasten tightly.

Step 4. Attach the necessary adapter and accessory to the steam gun nozzle.

Step 5. Plug the steamer into the outlet and press the ON/OFF button to ON.

Step 6. The Red power light and Orange steam light, indicating that the steamer is building steam, should both illuminate.

Step 7. Allow approximately 9 minutes for the steamer to build up steam pressure.

Step 8. Once the orange steam pressure light turns off, the steamer is ready to use.

Section 5. Cleaning and Maintenance

- Cleaning and maintenance operations should be carried out with the appliance disconnected from the power supply.
- The steamer should be allowed to completely cool down before it is stored away or cleaned.
- Clean the steamer and its accessories with a slightly damp cloth only.
- Never use a cleaning product or detergent.
- To ensure that your steamer operates correctly over a long period of time, rinse the water tank out once a month to remove limescale deposits. White vinegar or a proprietary descaler solution can be used to clean inside the water tank.
- There are no customer service parts to the boiler unit, all repairs must be carried out by a qualified person.

Section 6. Specifications

Item	Detail
Model Name	Steamer ST01
Main Material	ABS/Nylon
Water Tank Capacity	50.7 fl-oz (1500 ml)
Water Tank Material	Stainless Steel
Power	1500W 120V/ 60Hz
Warm Up	12 Minutes
Pressure	4.0 Bar
Cord Length	2.5M
Working Time	40 minutes
Size	16.9 x 9.8 x 11.0 in. (430 x 250 x 280 mm)
Weight (Net/Gross)	10.3 lb. / 14.3lb.

Section 7. Troubleshooting

Problems	Possible Causes	Solutions
Unit fails to heat up. Red Power light DOES NOT illuminate when ON/OFF switch is set to ON.	<ol style="list-style-type: none">1. Unit is not plugged in.2. Loose electrical connection.3. Unit is damaged or in need of repair.	<ol style="list-style-type: none">1. Check wall outlet.2. Discontinue use and contact Customer Service.3. Discontinue use and contact Customer Service.
Unit fails to heat up. Red Power light DOES illuminate when ON/OFF switch is on.	<ol style="list-style-type: none">1. Water tank is empty.2. Mineral build-up in unit.3. Unit is damaged or in need of repair.	<ol style="list-style-type: none">1. Refer to Filling Water Tank procedure on Page 10.2. Refer to Cleaning and Maintenance section on page 13 for cleaning procedure.3. Discontinue use and contact Customer Service.
Steam output is weak or intermittent.	<ol style="list-style-type: none">1. Water level in tank is running low.2. Steam hose may be kinked internally.3. Mineral build-up in unit.	<ol style="list-style-type: none">1. Refer to Filling Water Tank procedure on Page 10.2. Remove kinks from steam hose. Rotating the steam gun around may help remove kinks.3. Refer to Cleaning and Maintenance section on page 13 for cleaning procedure.
Excessive amounts of water in steam. NOTE: The Steamer produces a great deal of steam. The steam may condense as water or water droplets in the steam hose, tools and nozzle, which are then expelled when used after a period of cooling. This is normal and not a cause for concern.	<ol style="list-style-type: none">1. Water condensation in steam hose.2. Water tank has been overfilled.3. Unit has not heated to full operating temperature.	<ol style="list-style-type: none">1. Point nozzle towards sink, and shake while pressing steam trigger.2. Filling the water tank with more than 50.7 fl-oz/ 1500 ml of water interferes with steam production, resulting in water condensation. Turn unit off, let it cool and drain some water out of tank.3. Wait until Orange steam pressure indicator light has turned off.
Accessories do not stay firmly connected to main nozzle.	<ol style="list-style-type: none">1. Accessories are not properly installed.	Refer to Assembling and Attaching Accessories on page 9.
Floor surfaces appear to have streaks after cleaning.	<ol style="list-style-type: none">1. Floor brush cloth is dirty.2. Hard water residue on the floor.	<ol style="list-style-type: none">1. Replace the cleaning pad with a clean one.2. Switch to distilled or de-mineralized water.

Section 8. Warranty

8.1 – Violation

The Rollibot Steamer ST01 cannot be repaired or serviced within its warranty period if any of the following has occurred:



The warranty has expired.

Damage occurred during or in relation to non-routine and/or unauthorized disassembly.

Failure to provide a valid proof of purchase when requesting service or repair.

Damage occurred as a result of natural disaster.

Damage occurred due to unexpected factors or man-made reasons (including mis-operation, fluid found in any openings, improper insertion or pulling, hauling, bumping, improper voltage input and others).

8.2 – Information

Ninety Days (90 Days) Limited Hardware Warranty

Your Rollibot Steamer ST01 (“Product”) includes a Ninety Days (90 Days) Limited Hardware Warranty (“Warranty”). The Warranty covers product defects in materials and workmanship under normal use. This Warranty is limited to residents of the United States and Canada only and is available only to original purchasers. This Warranty gives you specific legal rights and you may also have other rights which vary from state to state.

This Warranty starts on the date of your purchase and lasts for Ninety Days (90 Days) (the “Warranty Period”). The Warranty Period is not extended if the Product is repaired or replaced. We may change the availability of this limited warranty at our discretion, but any changes will not be retroactive.

Warranty services are provided by Warranty Pro. If a hardware defect arises and a valid claim is received within the Warranty Period, at its option and to the extent permitted by law, WP will: (1) repair the hardware defect by using new or refurbished parts that are equivalent to new in performance and reliability; or (2) exchange the Product with a product that is new or refurbished which is substantially equivalent to the original product. This Warranty is for one replacement only of like-items and does not cover items out of production if the product is no longer made or stocked. This Warranty is not assignable or transferable. The original purchaser may email to support@rollibot.com for service request.

When a product or part is exchanged, any replacement item becomes your property and the replaced item becomes WP’s property. This warranty only covers technical hardware defectiveness during the warranty period and under normal use conditions. WP does not warrant uninterrupted or error-free operation of this Product.

This Warranty does not cover any damage due to: (a) transportation; (b) storage; (c) improper use; (d) failure to follow the product instructions or to perform any preventive maintenance; (e) modifications; (f) unauthorized repair; (g) normal wear and tear; or (h) external causes such as accidents, abuse, or other actions or events beyond our reasonable control.

Important: Do not disassemble the Product. Disassembling the Product will void this Warranty. Only WP or a party expressly authorized by WP should perform service on this Product.

DISCLAIMER OF WARRANTY: THE REMEDIES DESCRIBED ABOVE ARE YOUR SOLE AND EXCLUSIVE REMEDIES AND OUR ENTIRE LIABILITY FOR ANY BREACH OF THIS LIMITED WARRANTY. OUR LIABILITY SHALL UNDER NO CIRCUMSTANCES EXCEED THE ACTUAL AMOUNT PAID BY YOU FOR THE DEFECTIVE PRODUCT, NOR SHALL WE UNDER ANY CIRCUMSTANCES BE LIABLE FOR ANY CONSEQUENTIAL, INCIDENTAL, SPECIAL OR PUNITIVE DAMAGES OR LOSSES, WHETHER DIRECT OR INDIRECT.

SOME STATES DO NOT ALLOW THE EXCLUSION OR LIMITATION OF INCIDENTAL OR CONSEQUENTIAL DAMAGES, SO THE ABOVE LIMITATION OR EXCLUSION MAY NOT APPLY TO YOU.

THE DURATION AND REMEDIES OF ALL IMPLIED WARRANTIES, INCLUDING WITHOUT LIMITATION THE WARRANTIES OF MERCHANTABILITY AND FITNESS FOR A PARTICULAR PURPOSE ARE LIMITED TO THE DURATION OF THIS EXPRESS LIMITED WARRANTY.



Copyright © 2023. Rollibot, LLC. All Rights Reserved